



FORMATION EVALUATION LOG

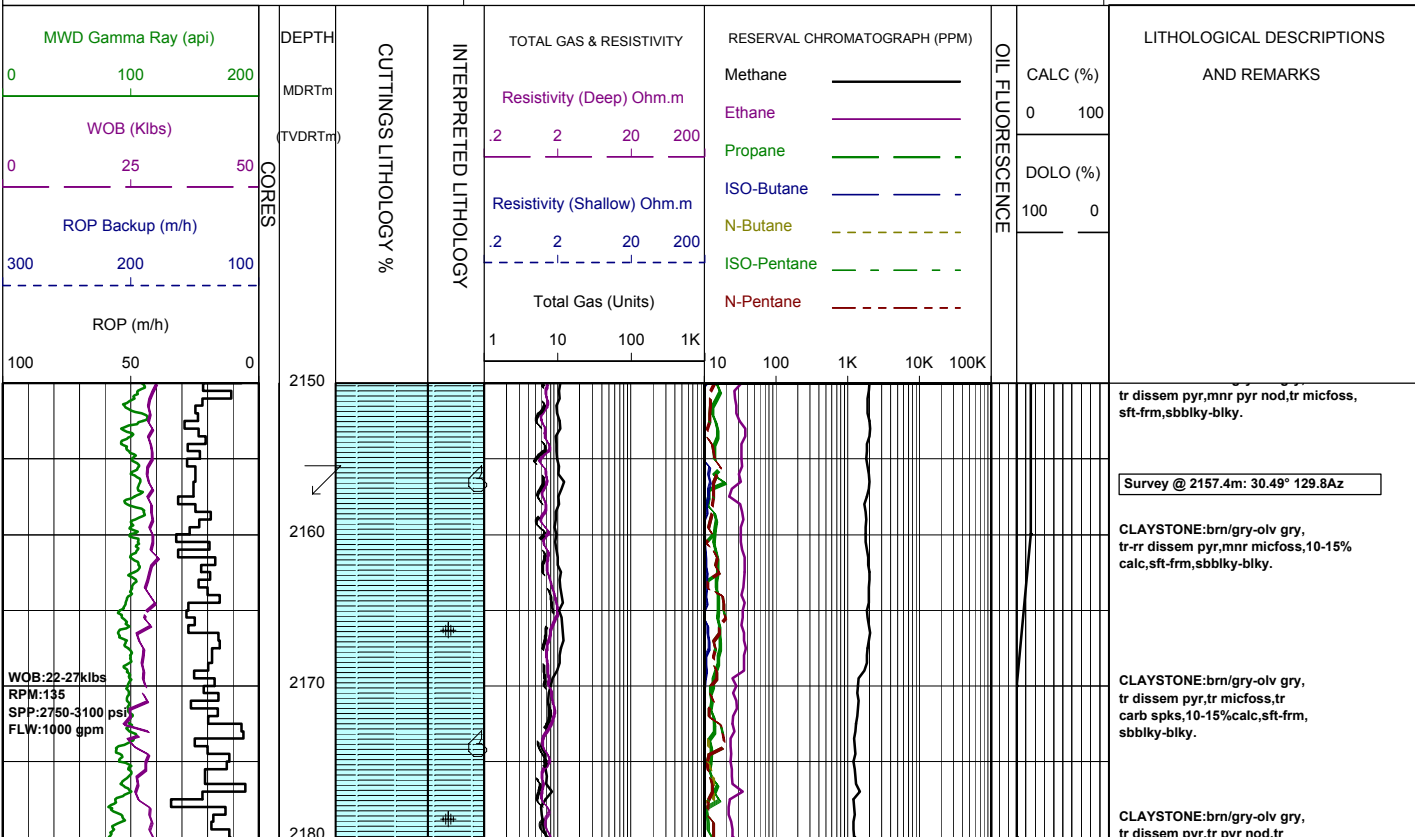


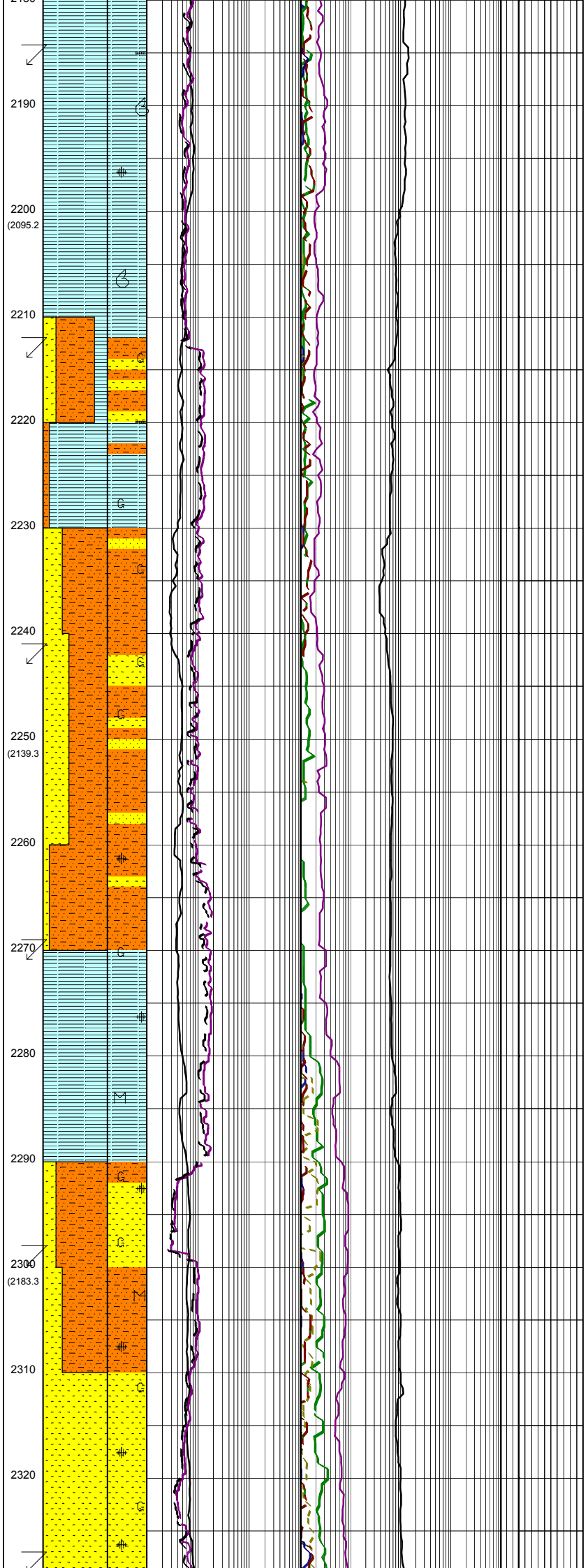
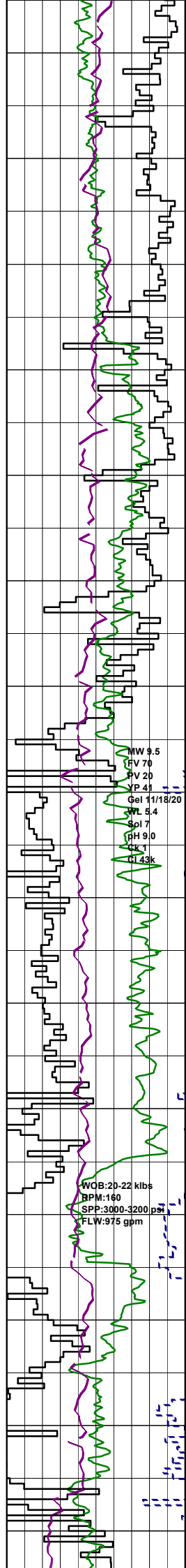
WELL : BASKER-5

FROM (m): 2150 TO (m): 3200 SCALE: 1/ 500

POSITION		HOLE / CASING INFO	
Country : AUSTRALIA	Latitude : 38°17'59.31"S	17 1/2" Hole to (mMDRT) : 1012m	Spud Date : 26-02-2006
Basin : GIPPSLAND	Longitude : 148°42'23.80"E	12 1/4" Hole to (mMDRT) : xxxm	Total Depth Date : xx-xx-2006
Field : BASKER	UTM Co-ord X (m E) : 650106.2	8 1/2" Hole to (mMDRT) : 3357m	Total Depth (mRT) : 3357m
Permit : VIC/L26	UTM Co-ord Y (m N) : 5761989.6	13 3/8" Shoe at (mMDRT) : 1001.3m	T.V.D. (mSS MSL) : 3072m
Well Type : DEVELOPMENT	RT-LAT (m) : 21.5	9 5/8" Shoe at (mMDRT) : xxxm	Status :
Rig Name : OCEAN PATRIOT	RT-Seabed (m) : 175.1	7" Shoe at (mMDRT) : xxxm	

ABBREVIATIONS	LITHOLOGY LEGEND	ENGINEERING LEGEND
MW MUD WEIGHT FV FUNNEL VISCOSITY PV PLASTIC VISCOSITY YP YIELD POINT FC FILTER CAKE SOL SOLIDS WL FILTRATE SD SAND - % S SALINITY - PPM RM MUD RESISTIVITY RMF MUD FILTRATE C CARBIDE TEST LAT LOGGED AFTER TRIP DS DEVIATION SURVEY	NB NEW BIT RR RERUN BIT CB CORE BIT WOB WEIGHT ON BIT RPM REVS PER MINUTE FLC FLOW CHECK CR CIRCULATE RETURNS PR POOR RETURNS NR NO RETURNS BG BACKGROUND GAS TG TRIP GAS STG SHORT TRIP GAS CG CONNECTION GAS SG SWAB GAS SVG SURVEY GAS	Shoe FIT Mud loss Deviation survey DST Mud gain Test Sidewall Core Core RFT
Claystone Siltstone ar. Silt ar Fine SST Medium SST Coarse SST Marl Clay, Limestone	Limestone Dolomite Coal Gypsum Lithic Fragment Foraminifera Fossils Bryozoa	Brachiopoda Cement Sponges Glauconite Pyrite Iron Minerals Mica Carb Fragments





micfoss, mnr carb spks, tr calc, sft-frm, sbbiky-sbfiss.

Survey @ 2186.1m: 29.68° 128.9Az

CLAYSTONE: brn/gry-olv gry, tr dissem pyr, tr carb lams, mnr carb spks, tr calc, sft-frm, sbbiky-sbfiss.

CLAYSTONE: brn/gry-olv gry, tr dissem pyr, tr carb spks, tr calc, tr micfoss, sft-frm, sbbiky-blky.

CLAYSTONE: brn/gry-olv gry, tr dissem pyr, tr calc, tr micfoss, sft-frm, sbbiky-sbfiss tr blky.

Survey @ 2214.3m: 27.97° 129.8Az

SANDSTONE: clr-lt yel, crs-f, tr v crs, pr srt, sbrnd-sbang, tr ang, pr inf por, no fluor.

ARGILLACEOUS SILTSTONE: orgn brn-yel brn, tr calc, tr glauc, sft-frm, sbbiky-blky.

SILTY CLAYSTONE: orgn brn-yel brn, tr calc, tr glauc, tr carb spks, sft-v sft, occ disp, sbbiky-blky, occ amor.

ARGILLACEOUS SILTSTONE: grn/brn-gry/brn, com glauc, v sft-frm, occ disp, blky-sbbiky, occ amor.

Survey @ 2242.7m: 27.61° 129.6Az

SANDSTONE: clr-trnsl, med-vf, pr srt, sbang-sbrnd, com glauc, lse, pr inf por, no fluor.

ARGILLACEOUS SILTSTONE: grn/brn-gry/brn, com glauc, sft-disp, blky-amor.

ARGILLACEOUS SILTSTONE: grn/brn-gry/brn, com glauc, tr-rr dissem pyr, sft-disp, blky-amor.

Survey @ 2271.4m: 28.48° 130.6Az

SILTY CLAYSTONE: grn/brn-gry/brn, com glauc, tr-rr dissem pyr, sft-disp, blky-amor.

SILTY CLAYSTONE: grn/brn-gry/brn, com glauc, tr-rr dissem pyr, tr micmic, sft-disp, blky-amor.

ARGILLACEOUS SILTSTONE: grn/brn-gry/brn, com glauc, tr-rr dissem pyr, tr micmic, sft-disp, blky-amor.

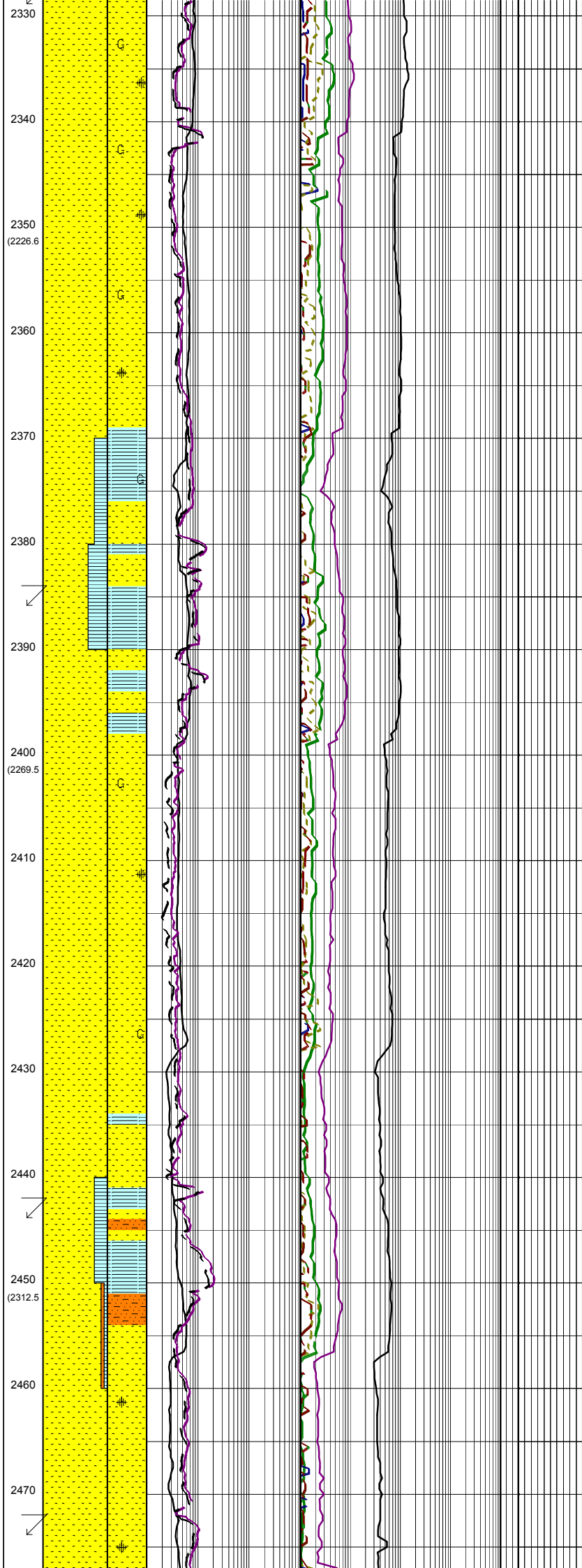
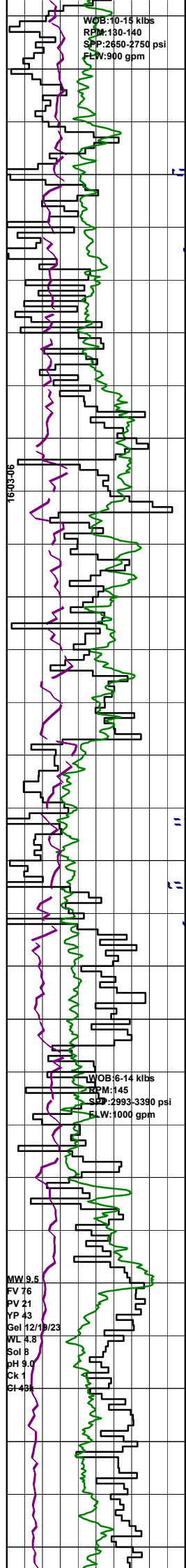
Survey @ 2300.1m: 28.83° 130.5Az

SANDSTONE: clr-trnsl, vf-med, tr crs pr srt, ang-sbang, tr glauc, tr dissem pyr, tr micmic, lse, gd inf por, no fluor.

SANDSTONE: clr-trnsl, med-vf, tr crs pr srt, ang-sbang, occ brn/gry sity mtx, tr glauc, tr dissem pyr, tr micmic, lse, gd inf por, no fluor.

SANDSTONE: clr-trnsl, med-vf, tr crs pr srt, ang-sbrnd, occ brn/gry sity mtx, tr glauc, tr dissem pyr, lse, gd inf por, no fluor.

Survey @ 2328.7m: 30.10° 130.3Az



SANDSTONE: clr-trnsl, f-med, tr crs, tr vf, mod srt, ang-sbrnd, occ brn/gry slty mtx, tr glauc, tr dissem pyr, lse, gd inf por, no fluor.

Survey @ 2357.5m: 31.19° 129.7Az

SANDSTONE: clr-trnsl, f-med, occ crs, mod srt, sbang-sbrnd, sph-sbsph, sil & pyr cmt, pred cl mtx, occ calc mtx, tr kao mtx, tr-com glauc, lse, gd inf por, no fluor

CLAYSTONE: med gry, occ brn/gry, com glauc, v sft, amor, partly w/out.

Survey @ 2386.4m: 30.97° 129.6Az

SANDSTONE: clr-trnsl, tr med dk gry-dk gry, pred crs-v crs, occ f-med, mod wl srt, sbang-sbrnd, sph-sbsph, tr sil & pyr cmt, tr kao mtx, tr glauc, lse, gd inf por, no fluor.

SANDSTONE: clr-trnsl, f-med, occ crs, mod srt, sbang-sbrnd, sph-sbsph, tr sil & pyr cmt, tr kao mtx, tr glauc, lse, gd inf por, no fluor.

Survey @ 2444.3m: 30.32° 129.7Az

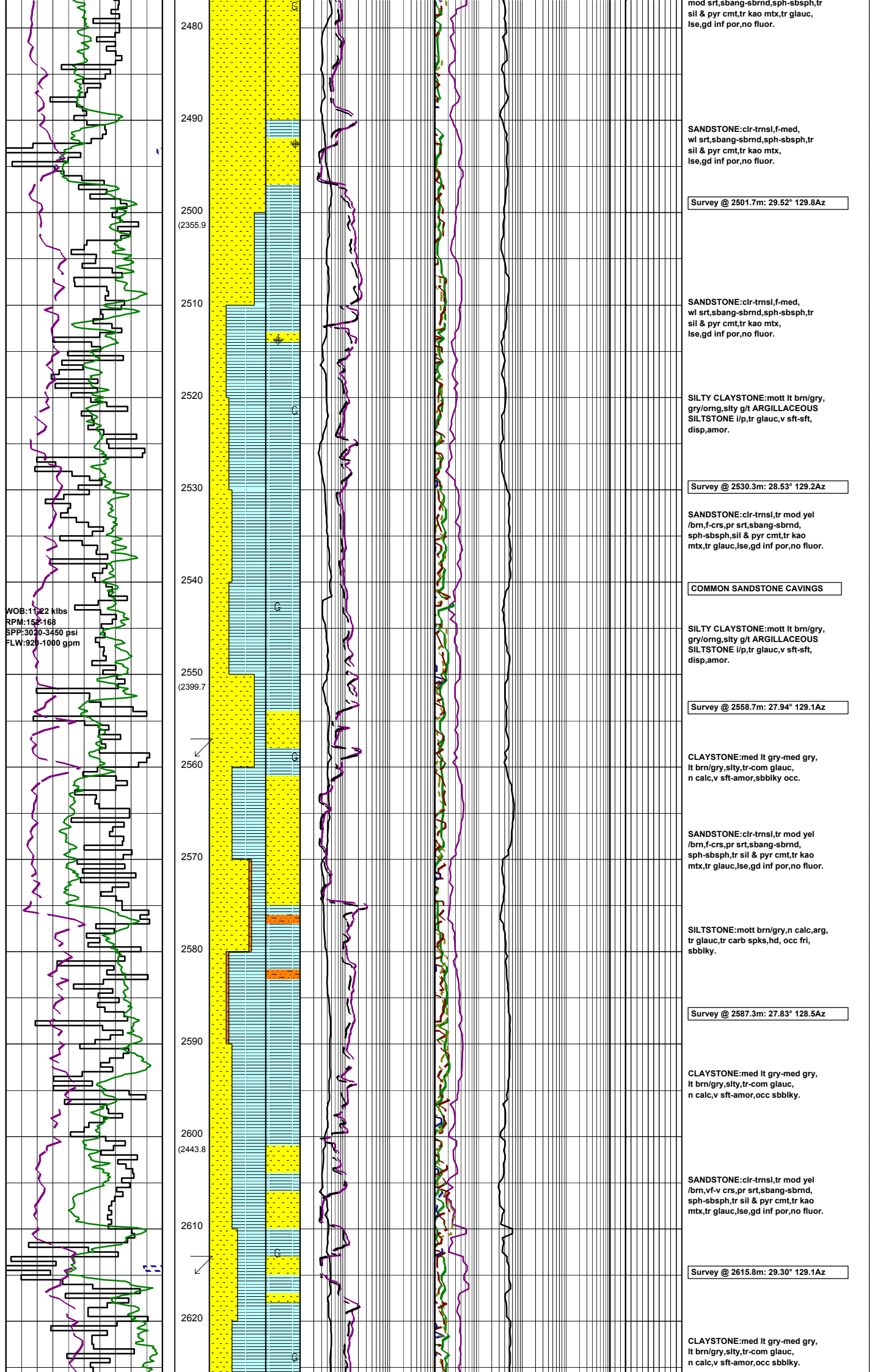
SILTSTONE: brn/gry, tr carb spks, pred fri, occ frm-hd, blk-y-sbbiky.

CLAYSTONE: med dk gry, tr pyr, frm-hd, sbbiky, occ sbfiss.

SANDSTONE: clr-trnsl, vf-crs, pr srt, sbang-sbrnd, sph-sbsph, tr sil & pyr cmt, tr kao mtx, tr chl, lse, gd inf por, no fluor.

Survey @ 2473.0m: 29.94° 129.8Az

SANDSTONE: clr-trnsl, vf-f,



SANDSTONE:clr-trmsl,f-med,
 wl srt,sbang-sbrnd,sph-sbsph,tr
 sil & pyr cmt,tr kao mtx,
 lse,gd inf por,no fluor.

Survey @ 2501.7m: 29.52° 129.8Az

SANDSTONE:clr-trmsl,f-med,
 wl srt,sbang-sbrnd,sph-sbsph,tr
 sil & pyr cmt,tr kao mtx,
 lse,gd inf por,no fluor.

SILTY CLAYSTONE:mott lt brn/gry,
 gry/org,slty g/t ARGILLACEOUS
 SILTSTONE i/p,tr glauc,v sft-sft,
 disp,amor.

Survey @ 2530.3m: 28.53° 129.2Az

SANDSTONE:clr-trmsl,tr mod yel
 /brn,f-crs,pr srt,sbang-sbrnd,
 sph-sbsph,sil & pyr cmt,tr kao
 mtx,tr glauc,lse,gd inf por,no fluor.

COMMON SANDSTONE CAVINGS

SILTY CLAYSTONE:mott lt brn/gry,
 gry/org,slty g/t ARGILLACEOUS
 SILTSTONE i/p,tr glauc,v sft-sft,
 disp,amor.

Survey @ 2558.7m: 27.94° 129.1Az

CLAYSTONE:med lt gry-med gry,
 lt brn/gry,slty,tr-com glauc,
 n calc,v sft-amor,sbbkly occ.

SANDSTONE:clr-trmsl,tr mod yel
 /brn,f-crs,pr srt,sbang-sbrnd,
 sph-sbsph,tr sil & pyr cmt,tr kao
 mtx,tr glauc,lse,gd inf por,no fluor.

SILTSTONE:mott brn/gry,n calc,arg,
 tr glauc,tr carb spks,hd, occ fri,
 sbbkly.

Survey @ 2587.3m: 27.83° 128.5Az

CLAYSTONE:med lt gry-med gry,
 lt brn/gry,slty,tr-com glauc,
 n calc,v sft-amor,occ sbbkly.

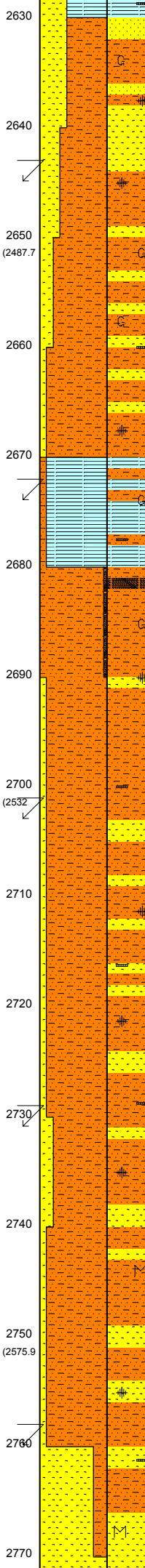
SANDSTONE:clr-trmsl,tr mod yel
 /brn,vf-v crs,pr srt,sbang-sbrnd,
 sph-sbsph,tr sil & pyr cmt,tr kao
 mtx,tr glauc,lse,gd inf por,no fluor.

Survey @ 2615.8m: 29.30° 129.1Az

CLAYSTONE:med lt gry-med gry,
 lt brn/gry,slty,tr-com glauc,
 n calc,v sft-amor,occ sbbkly.

WOB:20-24 kilbs
RPM:155
SPP:3100-3300 psi
FLW:960 gpm

WOB:20-28 kilbs
RPM:150
SPP:3040-3360 psi
FLW:918 gpm



SANDSTONE:clr-trmsl,f-crs,pr srt, sbang-sbrnd,tr-rr pyr nod,com glauc, tr carb mat,lse,pr inf por,no fluor.

Survey @ 2644.5m: 28.38° 129.1Az

ARGILLACEOUS SILTSTONE:med lt gry-med gry,com glauc, tr pyr nod & dissem,tr carb mat, disp frm,amor-sbbiky.

SANDSTONE:clr-trmsl, vf-crs,tr v crs,v pr srt,sbrnd-sbang, tr carb mat,tr glauc,tr pyr nod & dissem,lse,gd inf por,no fluor.

ARGILLACEOUS SILTSTONE:med lt gry-med gry,com glauc, tr pyr nod & dissem,tr carb mat, disp frm,amor-sbbiky.

Survey @ 2676.5m: 27.29° 128.4Az

SILTY CLAYSTONE:lt olv gry- lt gry,tr off wh,calc,kaol i/p, tr glauc,tr pyr nod & dissem,tr carb mat,disp-sft,amor-sbfiss.

ARGILLACEOUS SILTSTONE: lt olv gry-lt gry,tr-rr dk gry,tr off wh,mnr calc,kaol i/p,tr pyr dissem, tr glauc,sft-frm,tr disp,sbbiky-sbfiss, tr amor.

COAL:olv blk-gry/brn,dll-ea, slty,mod hd-frm,com brit,sbfiss-sbbiky,ang-unevn.

SANDSTONE:clr-trmsl,f-crs,tr v crs,pr srt,sbrnd-sbang,lse,gd inf por,no fluor.

Survey @ 2702.5m: 27.35° 128.8Az

ARGILLACEOUS SILTSTONE: lt olv gry-lt gry,tr-rr dk gry,tr off wh,mnr calc,kaol i/p,tr pyr nod,tr carb mat,sft-frm,tr disp,sbbiky-sbfiss,tr amor.

SANDSTONE:clr-trmsl,f-crs,tr v crs,pr srt,sbang-ang,lse,fr inf por,no fluor.

ARGILLACEOUS SILTSTONE: lt olv gry-lt gry,tr off wh, kaol i/p,tr pyr nod,tr carb mat, sft-frm,tr disp,sbbiky-blky, tr amor.

Survey @ 2731.3m: 28.69° 129.1Az

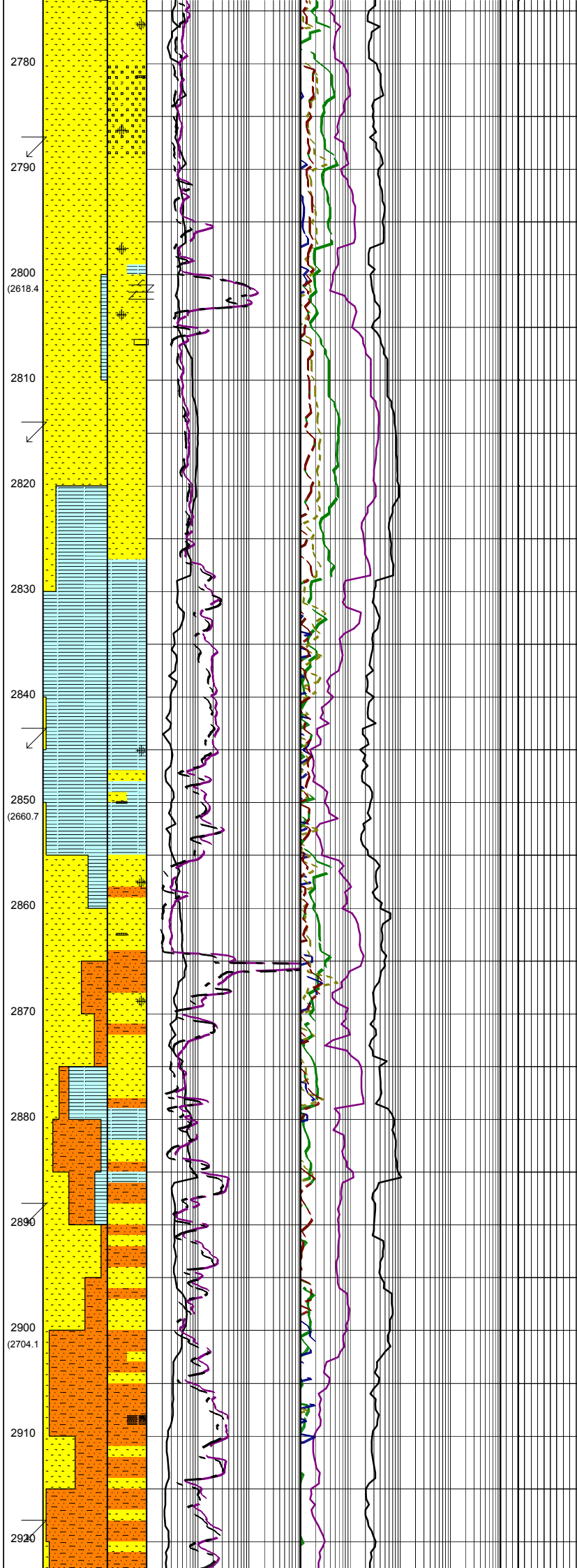
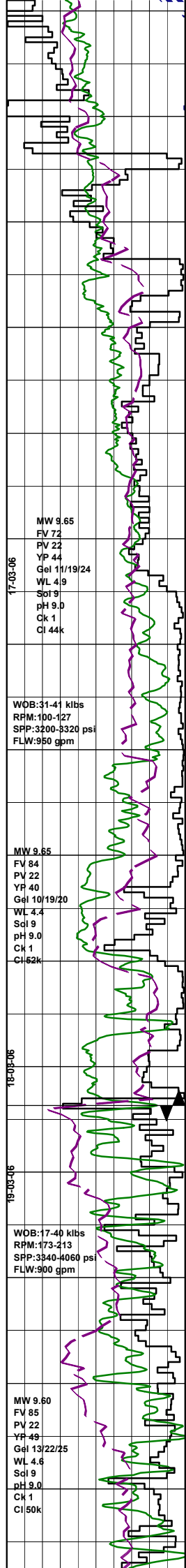
SANDSTONE:clr-trmsl,f-med,tr crs,pr srt,sbrnd-sbang,lse,gd inf por,no fluor.

ARGILLACEOUS SILTSTONE: lt olv gry-lt gry,tr off wh, kaol i/p,tr pyr nod,tr carb mat, tr mic,sft-frm,tr disp,blky-sbbiky, tr amor.

SANDSTONE:clr-trmsl,f-med,tr crs,tr vf,pr srt,sbrnd-sbang,lse, gd inf por,no fluor.

Survey @ 2759.9m: 30.71° 130.0Az

SANDSTONE:clr-trmsl,tr opq, vf-crs,tr v crs,v pr srt,sbang-sbrnd,calc,tr pyr nod,tr mic, tr carb mat,lse,gd inf por, no fluor.



SANDSTONE:clr-trmsl,tr opq, vf-crs,com v crs,v pr srt,sbang-sbrnd,tr pyr nod & cmt aggs i/p, lse,tr frm aggs,gd inf por,no fluor.

Survey @ 2788.2m: 33.03° 129.3Az

SANDSTONE:clr-trmsl,tr opq, crs-f,com v crs,v pr srt,rnd-sbang, tr ang,tr qtz ovghs,tr pyr nod & cmt aggs,lse,tr frm-mod hd,gd inf por, no fluor.

SANDSTONE:clr-trmsl,tr opq, f-crs,tr v crs,v pr srt,rnd-sbang, tr ang,tr qtz ovghs,tr pyr nod & cmt aggs,tr dolo cmt,lse,tr frm-mod hd, gd inf por,no fluor.

Survey @ 2816.4m: 33.18° 128.2Az

CLAYSTONE 1:mott v lt-lt gry,med dk gry,tr silt,tr calc,rr micfoss,tr carb carb mat,amor-sbbkly,v sft-sft, occ frm.

CLAYSTONE 2:dk gry,sl calc,frm, blkly-spintry,homogen
Cavings:50mmx10mm in coarse sieve sample.

Survey @ 2845.3m: 31.25° 128.1Az

CLAYSTONE:dk gry-lt gry,com off wh,occ aren i/p,tr calc i/p,tr pyr nod,tr carb mat,frm-sft,tr disp, blkly-sbfiss,tr amor.

SANDSTONE:clr-trmsl,tr opq f-crs,tr v crs,v pr srt,ang-rnd, tr pyr nod,tr carb mat,tr sil lams, tr qtz ovghs,lse,gd inf por, no fluor.

ARGILLACEOUS SILTSTONE: lt gry-dk gry,tr off wh,tr pyr nod, tr carb mat,frm-sft,tr disp,blkly-sbbkly,tr amor.

SANDSTONE:clr-trmsl,tr opq, f-med,pr srt,sbang-sbrnd,tr rock flour,tr pyr nod,tr carb mat,lse,fr inf por,no fluor.

Rmf 2878m:0.08 ohm @ 75°F

Bit#: SMITH BVCP
SIZE:311mm (12.25")
JETS:3x24, 1x16
IN: 2878m OUT:3191
RUN:313m HRS:25.8
COND:3-5-BT-G-E-1-WT-PR

Survey @ 2890.1m: 29.25° 127.8Az

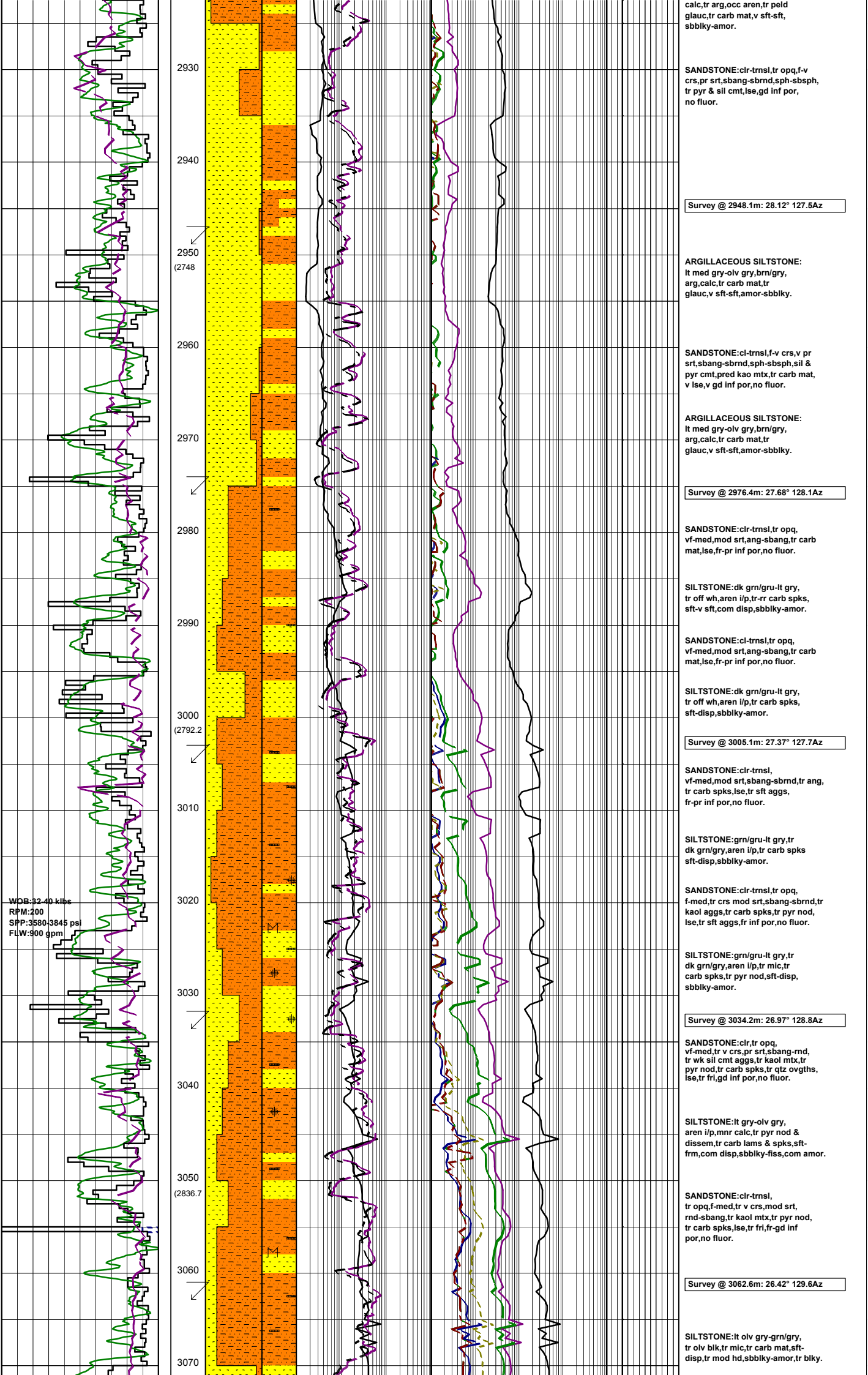
SILTSTONE:lt gry-lt brn/gry, calc,tr arg,occ aren,tr peld glauc,tr carb mat,v sft-sft, sbbkly-amor.

SANDSTONE:clr-trmsl,med-crs, occ v crs,pr srt,sbang-sbrnd,sph-sbph,tr pyr cmt,lse, gd inf por,no fluor.

COAL:blk,dll,silty,pyr,frm-brit, blkly-hckly.

Survey @ 2919.4m: 28.69° 128.8Az

SILTSTONE:lt gry-lt brn/gry,



calc, tr arg, occ aren, tr peld glauc, tr carb mat, v sft-sft, sbbiky-amor.

SANDSTONE: clr-trnsl, tr opq, f-v crs, pr srt, sbang-sbrnd, sph-sbsph, tr pyr & sil cmt, lse, gd inf por, no fluor.

Survey @ 2948.1m: 28.12° 127.5Az

ARGILLACEOUS SILTSTONE: lt med gry-olv gry, brn/gry, arg, calc, tr carb mat, tr glauc, v sft-sft, amor-sbbiky.

SANDSTONE: cl-trnsl, f-v crs, v pr srt, sbang-sbrnd, sph-sbsph, sil & pyr cmt, pred kao mt, tr carb mat, v lse, v gd inf por, no fluor.

ARGILLACEOUS SILTSTONE: lt med gry-olv gry, brn/gry, arg, calc, tr carb mat, tr glauc, v sft-sft, amor-sbbiky.

Survey @ 2976.4m: 27.68° 128.1Az

SANDSTONE: clr-trnsl, tr opq, vf-med, mod srt, ang-sbang, tr carb mat, lse, fr-pr inf por, no fluor.

SILTSTONE: dk grn/gru-lt gry, tr off wh, aren i/p, tr-r carb spks, sft-v sft, com disp, sbbiky-amor.

SANDSTONE: clr-trnsl, tr opq, vf-med, mod srt, ang-sbang, tr carb mat, lse, fr-pr inf por, no fluor.

SILTSTONE: dk grn/gru-lt gry, tr off wh, aren i/p, tr carb spks, sft-disp, sbbiky-amor.

Survey @ 3005.1m: 27.37° 127.7Az

SANDSTONE: clr-trnsl, vf-med, mod srt, sbang-sbrnd, tr ang, tr carb spks, lse, tr sft aggs, fr-pr inf por, no fluor.

SILTSTONE: grn/gru-lt gry, tr dk grn/gry, aren i/p, tr carb spks sft-disp, sbbiky-amor.

SANDSTONE: clr-trnsl, tr opq, f-med, tr crs mod srt, sbang-sbrnd, tr kaol aggs, tr carb spks, tr pyr nod, lse, tr sft aggs, fr inf por, no fluor.

SILTSTONE: grn/gru-lt gry, tr dk grn/gry, aren i/p, tr mic, tr carb spks, tr pyr nod, sft-disp, sbbiky-amor.

Survey @ 3034.2m: 26.97° 128.8Az

SANDSTONE: clr, tr opq, vf-med, tr v crs, pr srt, sbang-md, tr wk sil cmt aggs, tr kaol mt, tr pyr nod, tr carb spks, tr qtz ovghts, lse, tr fri, gd inf por, no fluor.

SILTSTONE: lt gry-olv gry, aren i/p, mn calc, tr pyr nod & dissem, tr carb lams & spks, sft-frm, com disp, sbbiky-fiss, com amor.

SANDSTONE: clr-trnsl, tr opq, f-med, tr v crs, mod srt, rnd-sbang, tr kaol mt, tr pyr nod, tr carb spks, lse, tr fri, fr-gd inf por, no fluor.

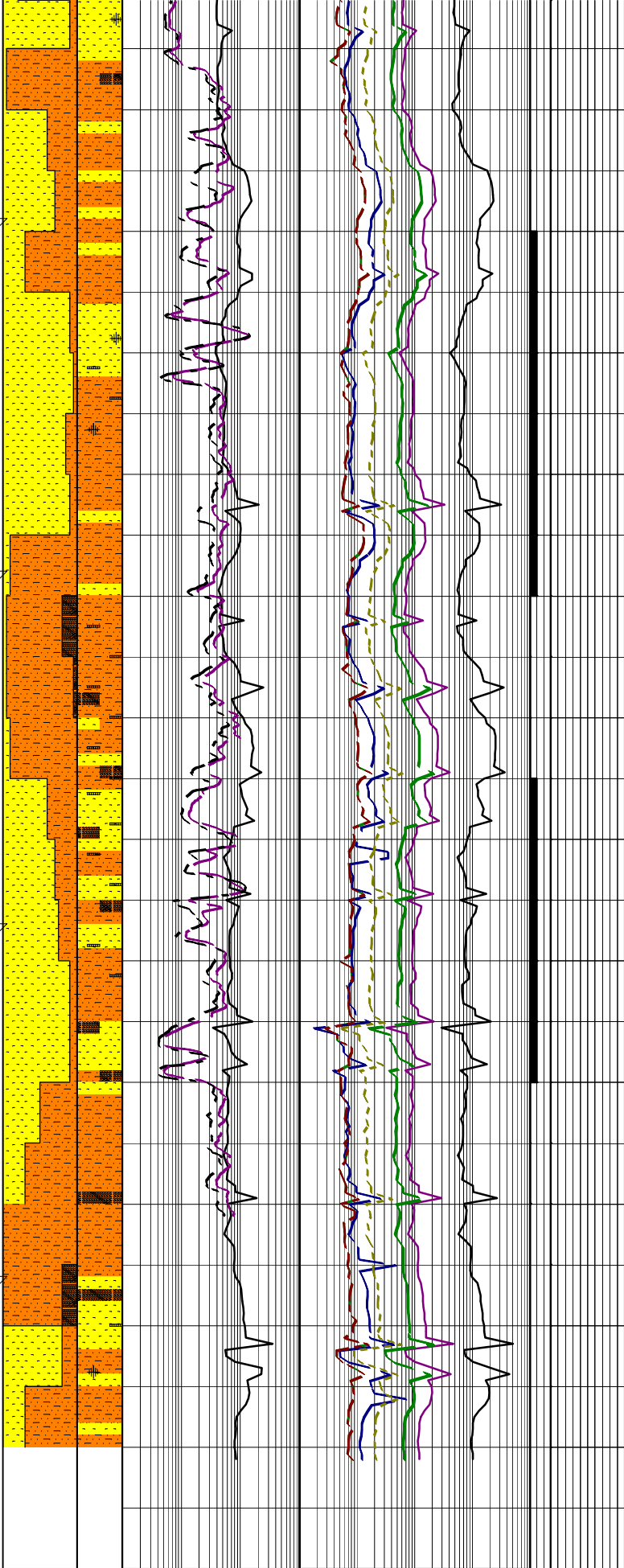
Survey @ 3062.6m: 26.42° 129.6Az

SILTSTONE: lt olv gry-grn/gry, tr olv blk, tr mic, tr carb mat, sft-disp, tr mod hd, sbbiky-amor, tr blk.

20-03-06

WOB: 30-47 kNis
RPM: 198
SPP: 3480-3760 psi
FLW: 890 gpm

3080
3090
3100 (2881.6)
3110
3120
3130
3140
3150 (2926.8)
3160
3170
3180
3190
3200



SANDSTONE:clr-tmsl, tr off wh,f-med,tr v crs,mod srt, ang-sbang,tr kaol mtx,tr pyr cmt & nod,tr carb spks,lse,tr fri,fr-gd inf gd inf por,no fluor.

Survey @ 3091.1m: 25.88° 130.1Az

SILTSTONE:brn/gry-brn/blk, com carb mat,arg i/p,n calc, v sft-sft,occ frm,sbbiky-amor.

SANDSTONE:clr-tmsl,vf-v crs, v pr srt,sbang-sbrnd,occ ang, sph-sbph,sil & pyr cmt,tr carb mat,rr mic,rr rd lith frags,pred lse-occ f gr fri agg,v gd inf por, fluor.

FLUOR:3095m-3120m;5-15%,dll yel/grn,no cut,no c/c,no r/r.

Survey @ 3119.9m: 25.24° 129.7Az

COAL:blk,vit,v hd & brit,sbconch-biky.

SILTSTONE:lt brn/gry-brn/gry-brn/blk,com crs carb mat,arg i/p, v sft-sft,occ frm,sbbiky-amor.

SANDSTONE:clr-tmsl,f-v crs,v pr srt,sbang-sbrnd,sil & pyr cmt,kaol mtx,tr carb mat,rr mic,pred lse,v gd inf por,no fluor.occ agg med lt gry-med gry,clr,vf-f,wl srt,sbang-sbrnd, sph,sil calc cmt,fri,fr inf por,no fluor.

Rmf 3150m:0.07 ohm @ 75°F

Survey @ 3149.0m: 25.23° 131.9Az

SANDSTONE:clr-tmsl,f-v crs,v pr srt,sbang-sbrnd,sil & pyr cmt,abdtkao mtx,tr carb mat,lse,occ sft & fri aggs,fr inf por,fluor.

FLUOR:3140m-3160m;3-20%,dll grn/yel,no cut,no c/c,no r/r.

SILTSTONE:brn/gry-brn/blk,tr arg, com carb mat,v sft-sft,amor-sbbiky.

COAL:blk,vit,v hd & brit,sbconch-biky.

Survey @ 3177.4m: 25.66° 131.9Az

SANDSTONE:opq-trnsl,tr off wh,vf-med,mnr crs,pr srt,sbang-rnd,tr kaol mtx,lse,tr fri,fr-gd inf por, no fluor.

SILTSTONE:lt olv gry-dk gm/gry,aren i/p,tr pyr nod,tr calc, com carb mat,mod hd-sft,com disp, blkly-sbbiky,com amor.

Bit#6: REED RSX 162
SIZE: 311mm (12.25")
JETS: 3x20,3x18